

County Economic Status and Number of Distressed Areas in Appalachian Alabama, Fiscal Year 2019

*Counties in **Bold** Contain Distressed Areas*

<i>County</i>	<i>Economic Status</i>	<i>Number of Distressed Areas</i>	<i>County</i>	<i>Economic Status</i>	<i>Number of Distressed Areas</i>
Bibb	At-Risk	1	St. Clair	Transitional	
Blount	Transitional	1	Shelby	Competitive	
Calhoun	At-Risk	12	Talladega	At-Risk	7
Chambers	At-Risk	3	Tallapoosa	At-Risk	3
Cherokee	Transitional	1	Tuscaloosa	Transitional	14
Chilton	Transitional	1	Walker	At-Risk	5
Clay	Transitional	1	Winston	At-Risk	2
Cleburne	At-Risk	1			
Colbert	Transitional	2			
Coosa	At-Risk				
Cullman	Transitional	3			
DeKalb	At-Risk	4			
Elmore	Transitional				
Etowah	Transitional	13			
Fayette	At-Risk	2			
Franklin	At-Risk	1			
Hale	At-Risk	1			
Jackson	Transitional	3			
Jefferson	Transitional	52			
Lamar	At-Risk	2			
Lauderdale	Transitional	6			
Lawrence	At-Risk				
Limestone	Transitional	3			
Macon	Distressed				
Madison	Transitional	16			
Marion	At-Risk	2			
Marshall	Transitional	4			
Morgan	Transitional	5			
Pickens	At-Risk	1			
Randolph	At-Risk	1			

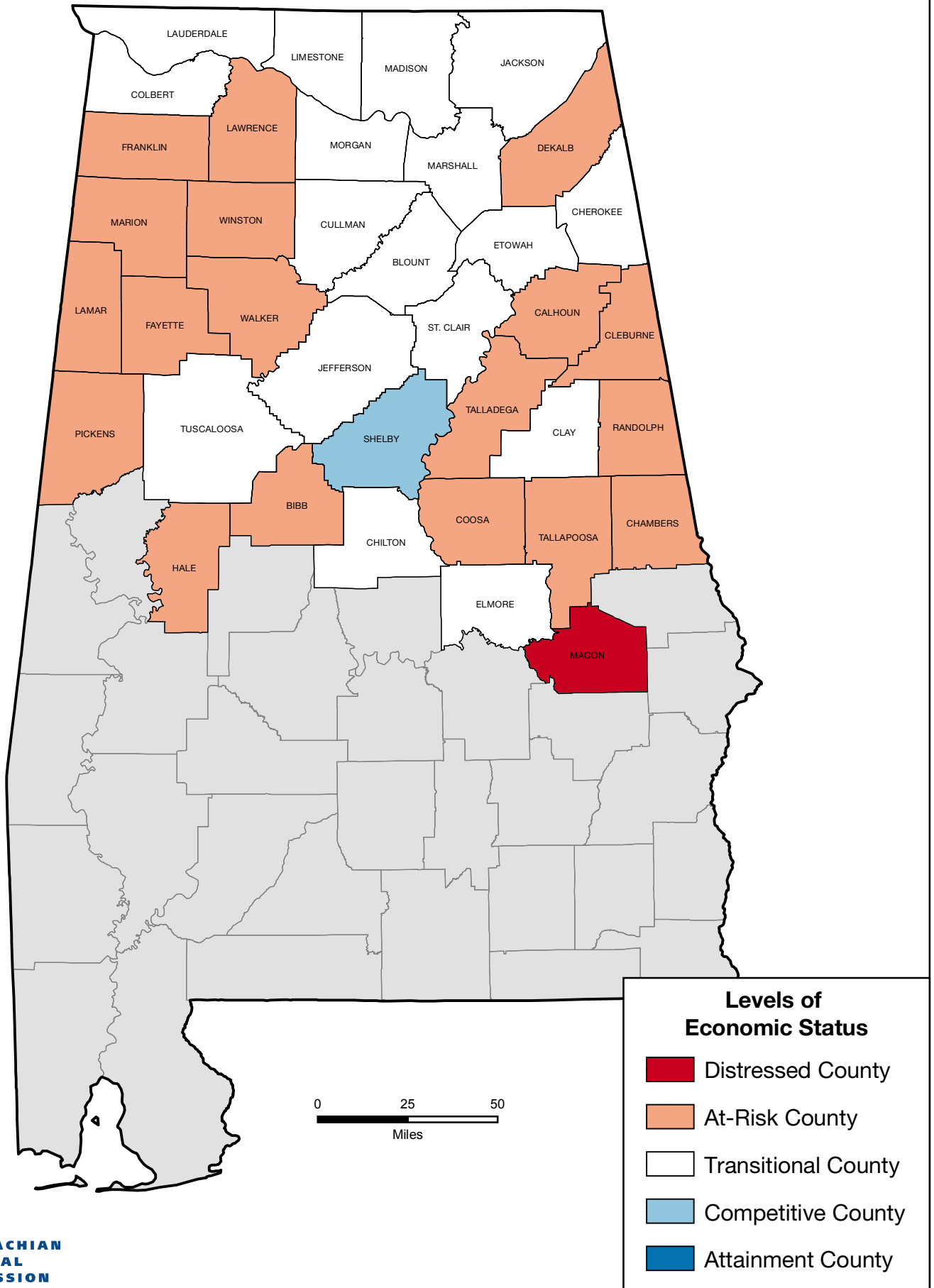
**Distressed Areas in Appalachian Alabama,
Fiscal Year 2019**

<i>County</i>	<i>Census Tract ID Number</i>	<i>County</i>	<i>Census Tract ID Number</i>
Bibb	100.02	Etowah	13
Blount	504	Etowah	17
Calhoun	2	Etowah	101
Calhoun	3	Etowah	104.01
Calhoun	4	Etowah	111
Calhoun	5	Etowah	112
Calhoun	6	Fayette	203
Calhoun	7	Fayette	204
Calhoun	8	Franklin	9730
Calhoun	12.01	Hale	404
Calhoun	16	Jackson	9502
Calhoun	21.01	Jackson	9508
Calhoun	21.03	Jackson	9511
Calhoun	23	Jefferson	1
Chambers	9538	Jefferson	3
Chambers	9539	Jefferson	4
Chambers	9545	Jefferson	5
Cherokee	9557.02	Jefferson	7
Chilton	604.02	Jefferson	8
Clay	9590	Jefferson	12
Cleburne	9596	Jefferson	14
Colbert	201	Jefferson	15
Colbert	203	Jefferson	19.02
Cullman	9648	Jefferson	20
Cullman	9654.02	Jefferson	21
Cullman	9657	Jefferson	22
DeKalb	9607	Jefferson	23.03
DeKalb	9608	Jefferson	24
DeKalb	9609	Jefferson	29
DeKalb	9614	Jefferson	30.02
Etowah	2	Jefferson	31
Etowah	3	Jefferson	32
Etowah	6	Jefferson	33
Etowah	7	Jefferson	34
Etowah	8	Jefferson	35
Etowah	9	Jefferson	37
Etowah	10	Jefferson	38.02

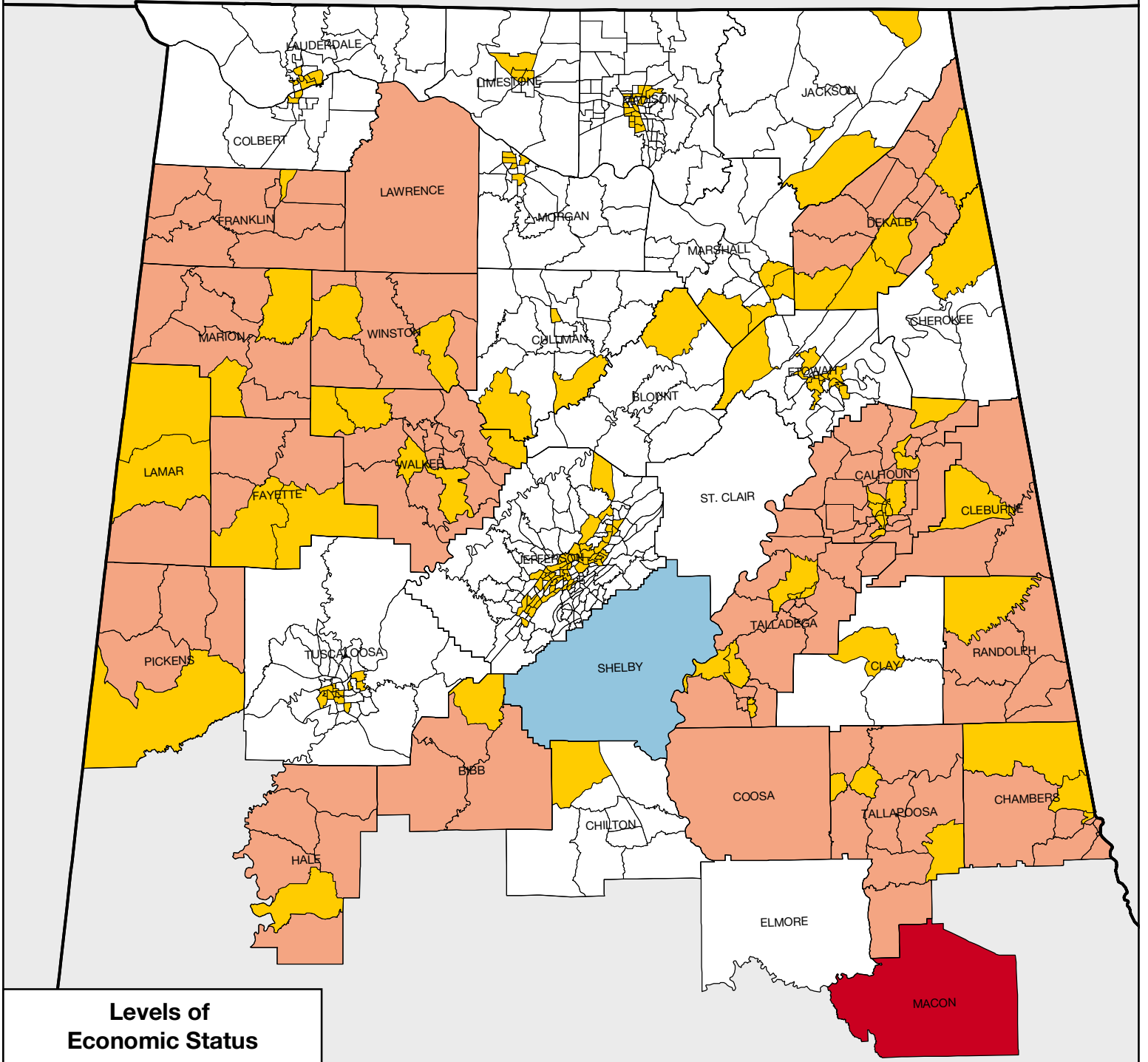
<i>County</i>	<i>Census Tract ID Number</i>	<i>County</i>	<i>Census Tract ID Number</i>
Jefferson	38.03	Madison	2.02
Jefferson	39	Madison	3.01
Jefferson	40	Madison	5.02
Jefferson	42	Madison	6.02
Jefferson	50	Madison	7.01
Jefferson	51.01	Madison	12
Jefferson	51.04	Madison	13.01
Jefferson	55	Madison	15
Jefferson	57.02	Madison	21
Jefferson	58	Madison	22
Jefferson	59.05	Madison	23
Jefferson	59.08	Madison	24
Jefferson	101	Madison	25.01
Jefferson	103.02	Madison	25.02
Jefferson	104.01	Madison	30
Jefferson	105	Marion	9640
Jefferson	106.02	Marion	9646
Jefferson	109	Marshall	308.01
Jefferson	112.10	Marshall	308.02
Jefferson	113.01	Marshall	310
Jefferson	118.02	Marshall	311
Jefferson	118.03	Morgan	1
Jefferson	119.01	Morgan	6
Jefferson	130.02	Morgan	7
Jefferson	131	Morgan	8
Jefferson	133	Morgan	51.09
Jefferson	136.01	Pickens	504
Jefferson	138.01	Randolph	1
Lamar	300	Talladega	103.01
Lamar	301	Talladega	105
Lauderdale	101	Talladega	106
Lauderdale	103	Talladega	113
Lauderdale	106	Talladega	114
Lauderdale	107	Talladega	118
Lauderdale	108	Talladega	120
Lauderdale	110	Tallapoosa	9621
Limestone	202.01	Tallapoosa	9622
Limestone	206	Tallapoosa	9626
Limestone	207	Tuscaloosa	105
Madison	2.01	Tuscaloosa	108.03

<i>County</i>	<i>Census Tract ID Number</i>	<i>County</i>	<i>Census Tract ID Number</i>
Tuscaloosa	114.01		
Tuscaloosa	114.02		
Tuscaloosa	116		
Tuscaloosa	117.01		
Tuscaloosa	117.03		
Tuscaloosa	118		
Tuscaloosa	119.01		
Tuscaloosa	119.02		
Tuscaloosa	120		
Tuscaloosa	123.04		
Tuscaloosa	124.05		
Tuscaloosa	128		
Walker	201		
Walker	210		
Walker	211		
Walker	215		
Walker	219		
Winston	9655.02		
Winston	9658		

County Economic Status in Appalachian Alabama, Fiscal Year 2019



County Economic Status and Distressed Areas in Appalachian Alabama, Fiscal Year 2019



AL

Levels of Economic Status

- Distressed County
- At-Risk County
- Distressed Area
- Transitional County
- Distressed Area
- Competitive County
- Attainment County

